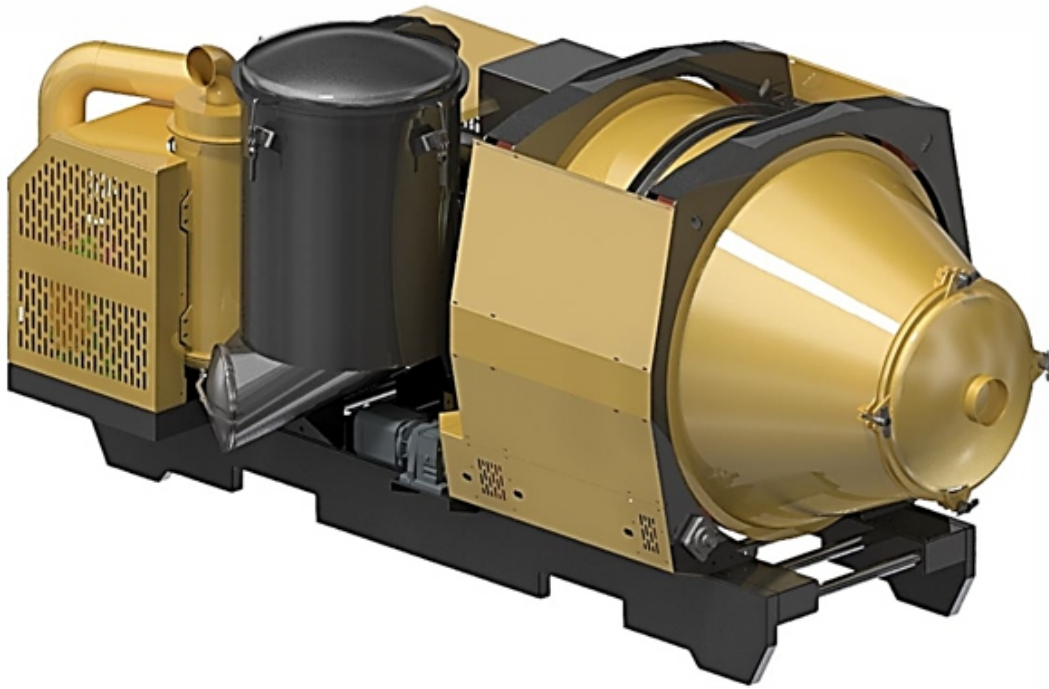


DUST-A-SIDE VACUUM SYSTEM



DV 3000 SYSTEM

Dust generated by large drilling equipment becomes problematic if not handled immediately. Many materials cannot be drilled using a wet drilling system, instead, the swarf is removed from the drill hole by means of compressed air. This creates a fine airborne dust that is not only a nuisance, it is an environmental and health hazard. From these conditions the need for a reliable, efficient and versatile dust capture and treatment system is clear.

HOW IT WORKS:

The DV 3000 unit firstly generates a vacuum that collects the dust from the drilling operation using a large liquid ring vacuum pump. The incoming air and dust mixture is separated by means of a large collection hopper acting as a cyclonic separator and later a series of bag filters. Once the dust is in the collection hopper it is treated with Dust-A-Side's proprietary binder HydroPlus.

The addition of HydroPlus facilitates the formation of pellets in the collection hopper. The pellets are hard enough to survive discharge and further handling without becoming dust sources later in the process. HydroPlus will bind even difficult to handle materials such as Kimberlite and Coal fines.

The pelletised product can then be discharged into the material handling system to ensure any valuable material can be recovered from the collected dust.

APPLICATIONS:

- Drill rigs both above and below ground
- Spilled fines collection around conveyors
- Heavy equipment that generates dust such as loaders and excavators

BENEFITS:

- Collect the dust preventing re-aerosolization
- Allow the processing of collected dust to extract remaining material
- Minimizes fine dust generation in later treatment stages

DV 3000 SPECIFICATIONS

PHYSICAL DIMENSIONS

HEIGHT	1821 mm
HEIGHT ON UV	2500 mm
LENGTH	4050 mm
WIDTH	1850 mm
WEIGHT	2500kg

MOTORS

TYPE	Electric 525V
POWER RATING	45KW
POWER SOURCE	Electric supply or Diesel Driven

VACUUM BIN

SIZE	3000 l
CAPACITY	1500 l

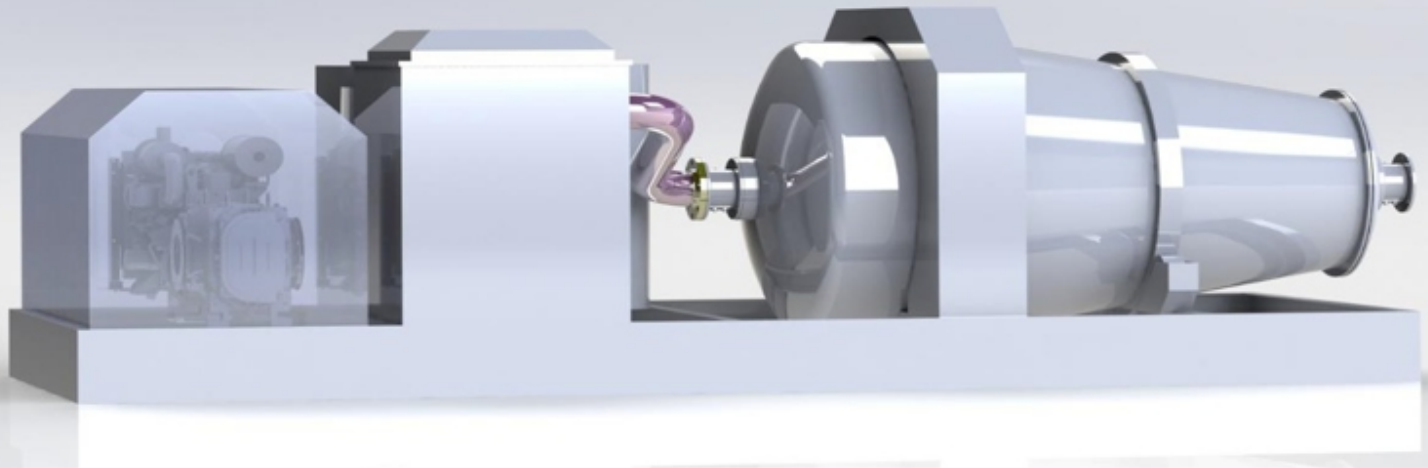
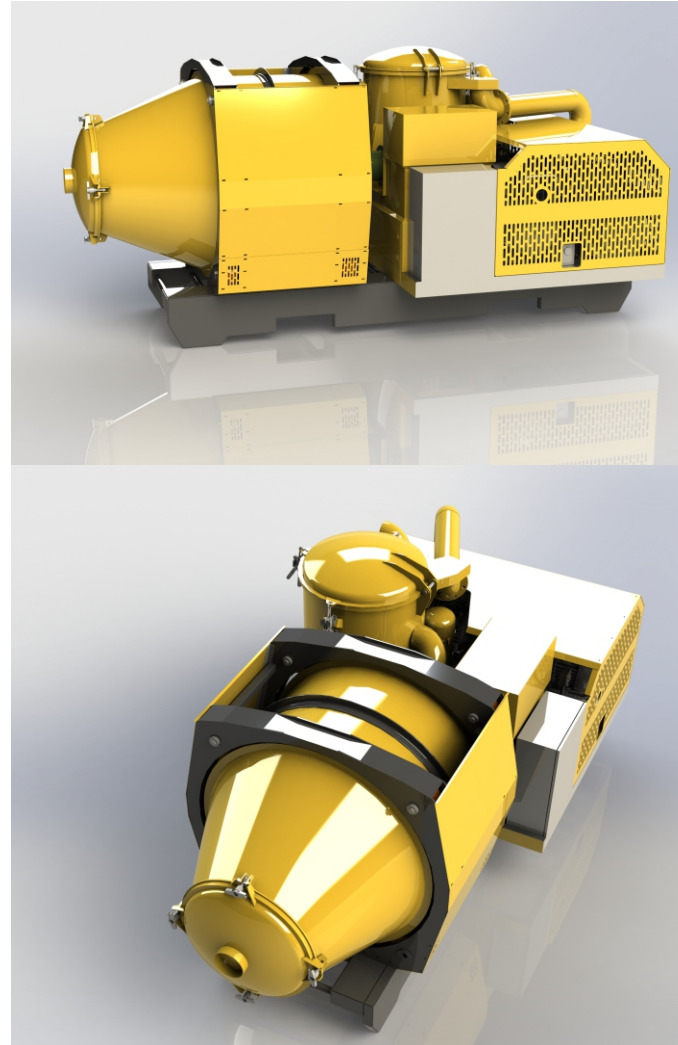
PUMP

TYPE	Centrifugal Pump
MODEL	Pentax Cm75
PUMPING SPEED	20L/min

ADDITIONAL EQUIPMENT

CHEMICAL TANK CAPACITY	420 l
NOISE	95 dB

*Design may vary to Client Specifications



For further information, expert advice or a quotation, email us on

info@dustaside.com

www.dustaside.com

